

Tab 4 - Testing & Geotechnical Investigation Reports

A. Port of Cates Landing

August 2009

B. Port Terminal/ Levee Road

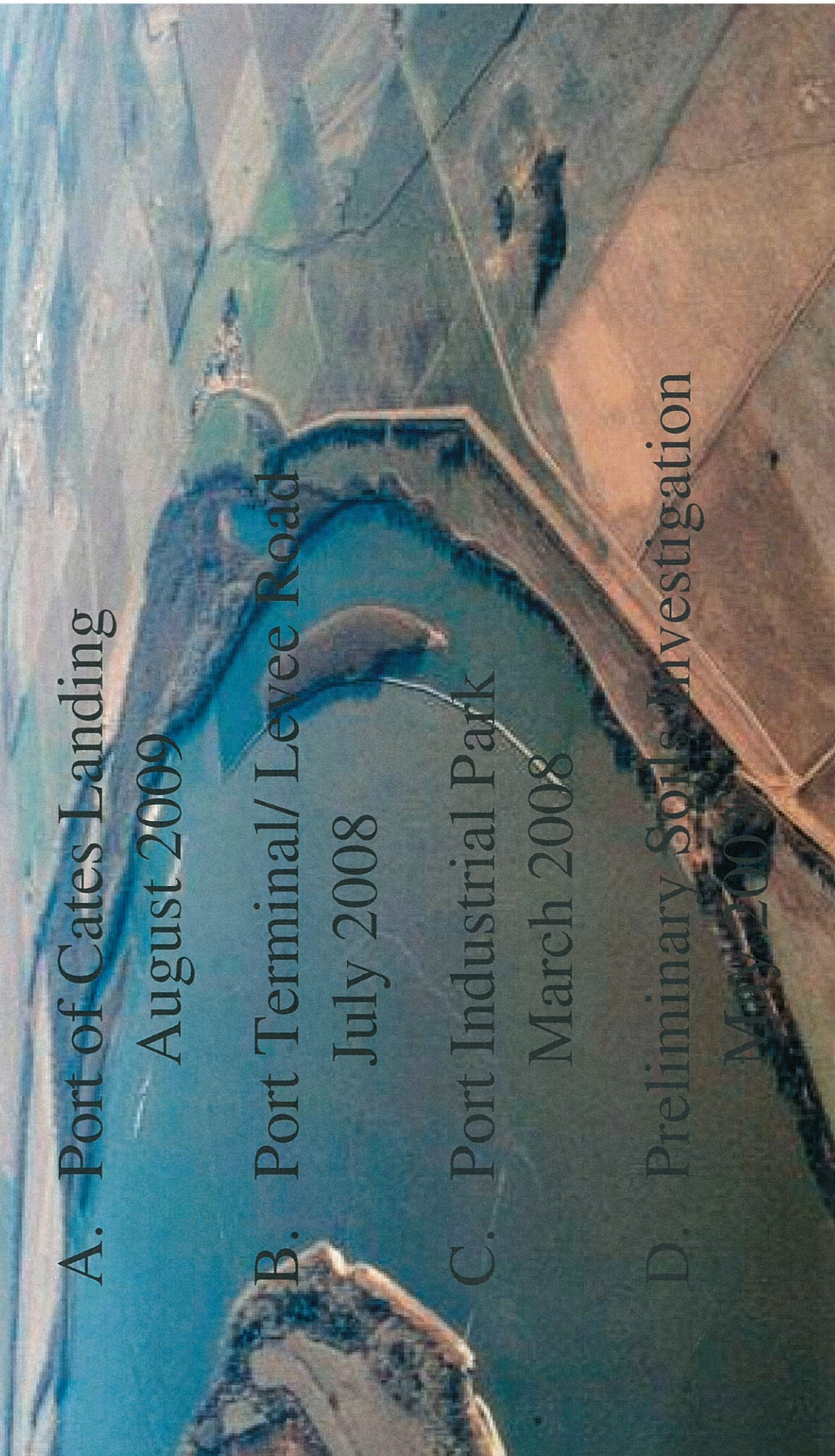
July 2008

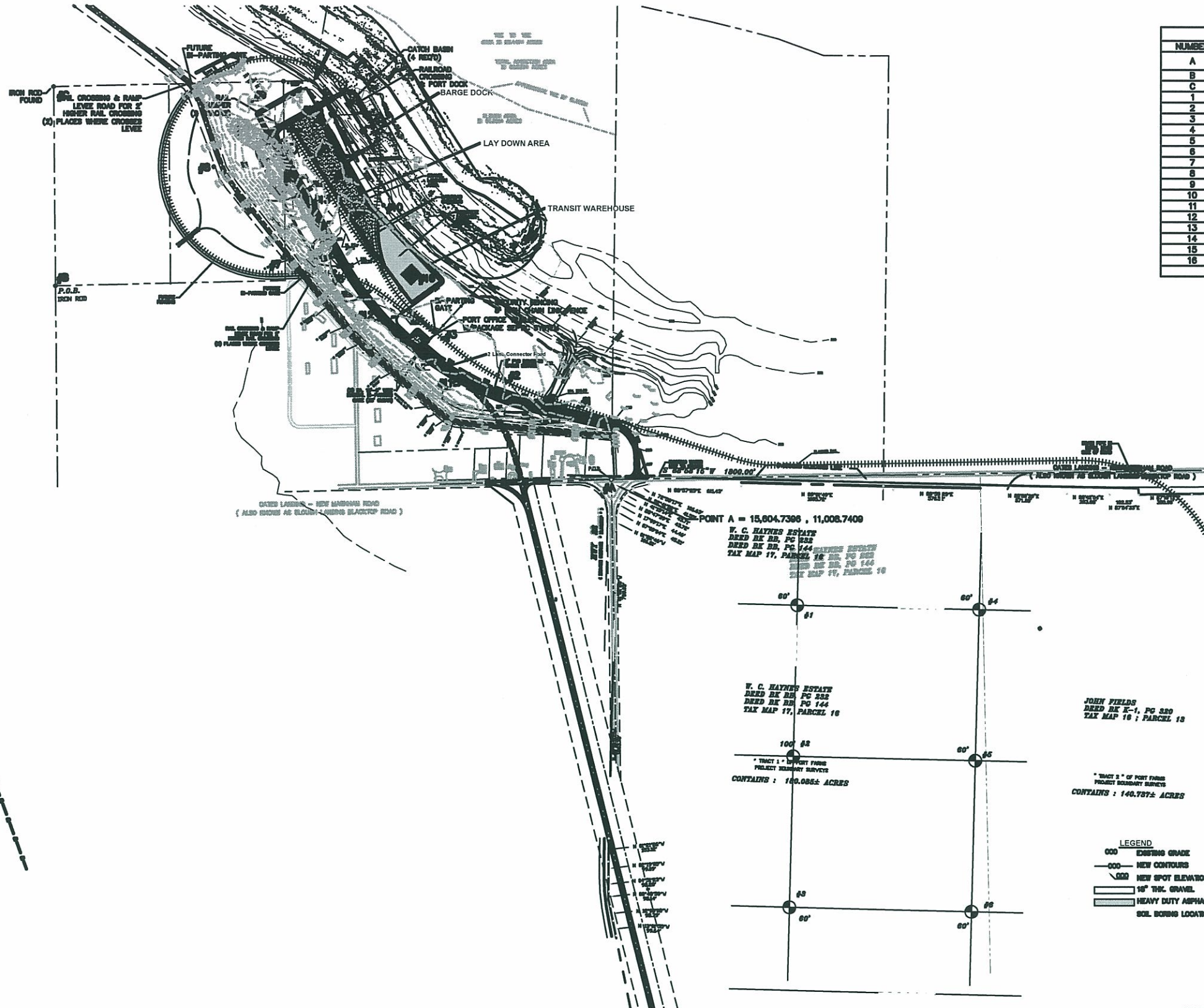
C. Port Industrial Park

March 2008

D. Preliminary Soils Investigation

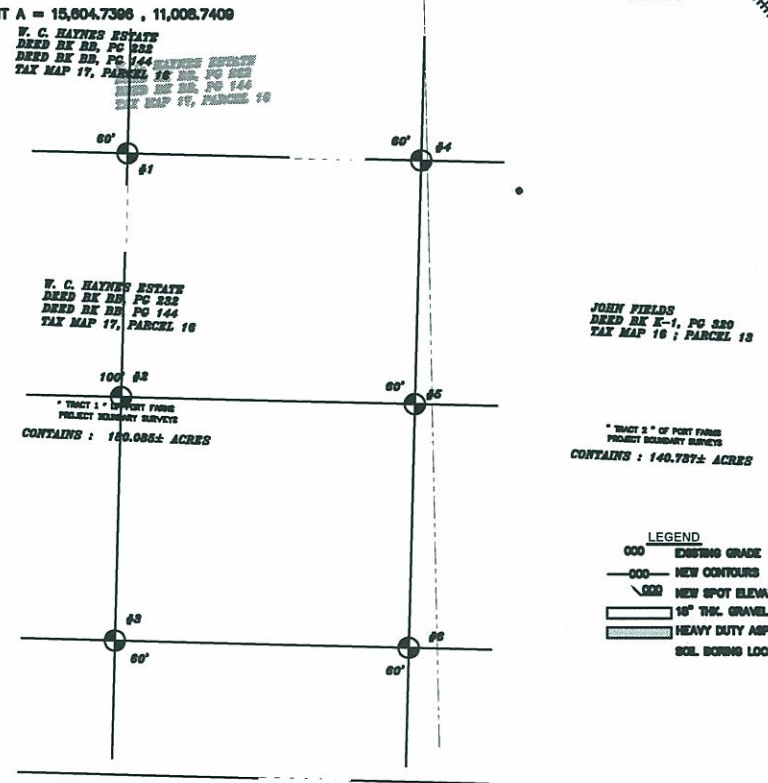
May 2008





SOIL BORING LOCATIONS		
NUMBER	X	Y
A	15,604.7398	11,008.7409
B	11,634.5040	12,288.8741
C	11,919.7033	13,808.7859
1	15,385.1670	11,487.8120
2	14,912.7028	11,886.3034
3	14,489.6194	11,942.3082
4	13,887.8203	12,714.2808
5	13,653.6100	13,150.7878
6	13,776.6529	12,366.4510
7	13,435.8311	12,475.3804
8	12,977.0676	13,077.7948
9	13,228.5430	13,513.1768
10	14,086.4884	12,824.1538
11	14,617.9541	11,878.9231
12	14,049.5737	12,141.9852
13	13,619.3673	12,838.5160
14	13,601.9133	13,418.6953
15	13,836.8598	12,972.2461
16	14,288.8080	12,368.1414

SOIL BORING LOCATION PLAN 8 DEG. LOOP
 SCALE: 1" = 200'-0"



NOTICE
 THIS DRAWING & THE INFORMATION CONTAINED HEREIN ARE THE EXCLUSIVE PROPERTY OF FORCUM LANNOM CONTRACTORS. IT SHALL BE RETURNED, UPON DEMAND, TO FORCUM LANNOM CONTRACTORS. IT SHALL NOT BE REPRODUCED OR MADE OR BE-POKE, INCLUDING TO ANYONE ELSE, OR USED, WITHOUT THE WRITTEN CONSENT OF FORCUM LANNOM CONTRACTORS.

DRAWN BY: IK
 DESIGN LEADER: ERL
 PROJECT NO.: 0618
 CHECKED BY: ERL
 REVIEWED BY: ERL (PROJECT MANAGER)

PROPOSED PORT SITE
 PORT OF GATES LANDING
 GATES LANDING, TENNESSEE
FORCUM LANNOM
 CONTRACTORS, LLC
 300 IIR Hwy. #1, BlueDuck, Nashville, Tennessee 37074. PH: 721.1 297.2700
 DATE: 06-18-09
 SHEET: SB1.0