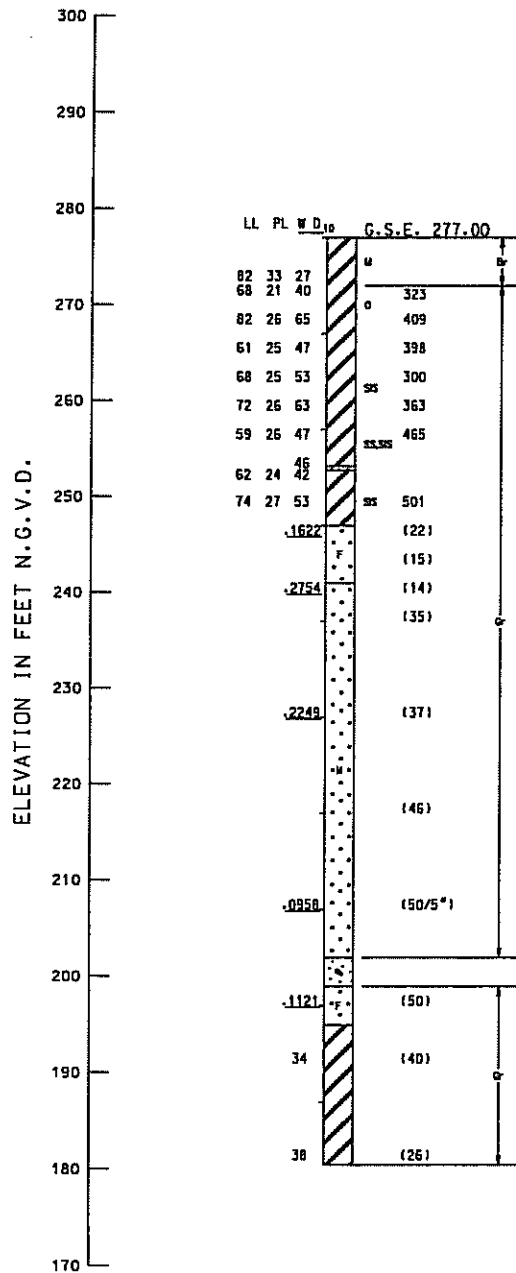


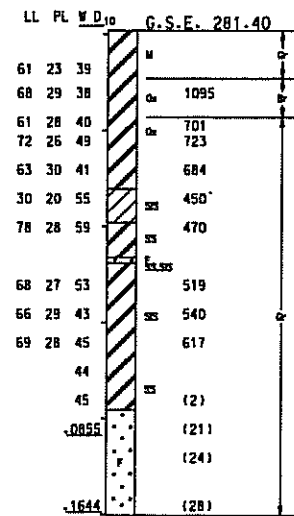
BOR. 2-NWTH-00

36°26'49.75"N 89°28'40.79"W
 BOR. TYPE-AUG, 5" TUBE & SS
 GROUND WATER EL. 274.2
 23 MAY 00



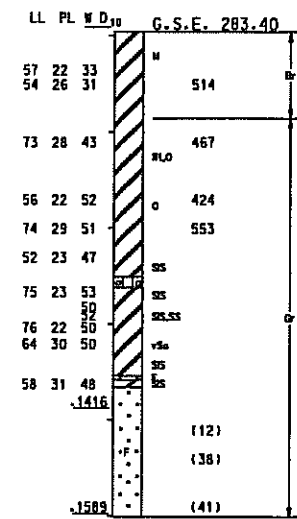
BOR. 3-NMTH-00

36°26'46.33"N 89°28'16.87"W
 BOR. TYPE-AUG, 5" TUBE & SS
 GROUND WATER EL. 278.95
 30 MAY 00



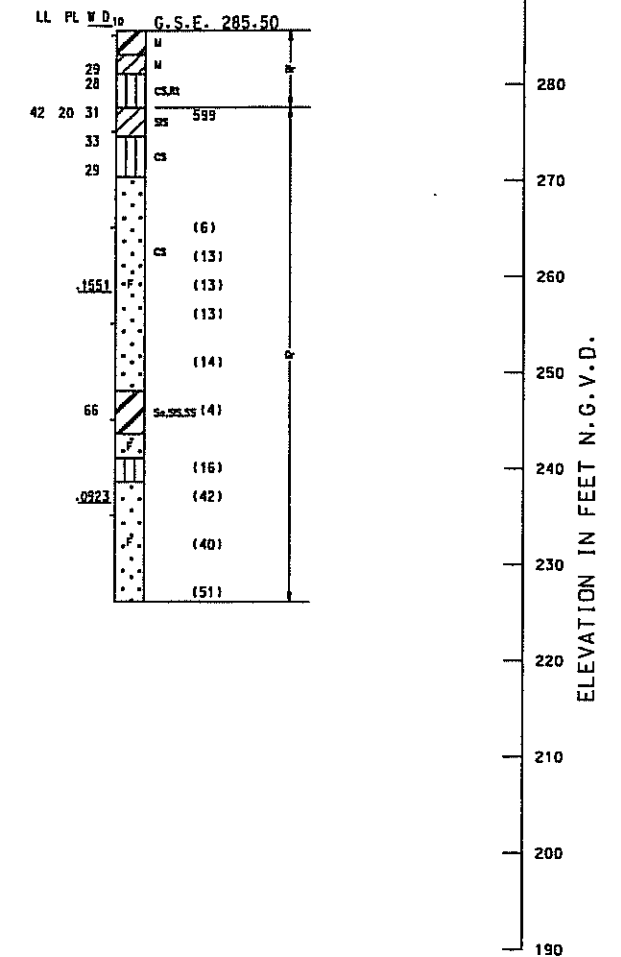
BOR. 4-NWTH-00

36°26'47.86"N 89°28'03.69"W
 BOR. TYPE-AUG, 5" TUBE & SS
 GROUND WATER EL. 277.9
 22 MAY 00



BOR. 5-NWTH-00

36°26'51.10"N 89°27'47.37"W
 BOR. TYPE-AUG, 5" TUBE & SS
 GROUND WATER EL. 279.8
 31 MAY 00



ALL EL. IN NATIONAL GEODETIC VERTICAL DATUM

MISSISSIPPI RIVER AND TRIBUTARIES
 NORTHWEST TN HARBOR

BORING LOGS

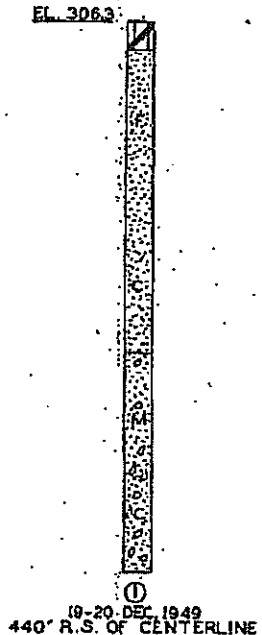
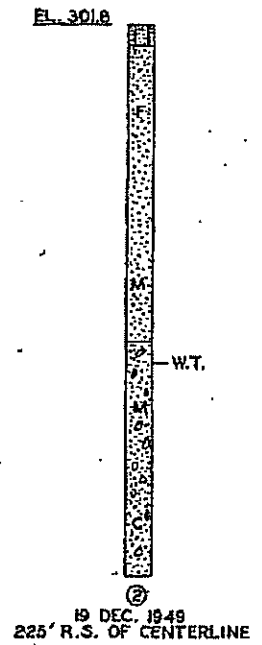
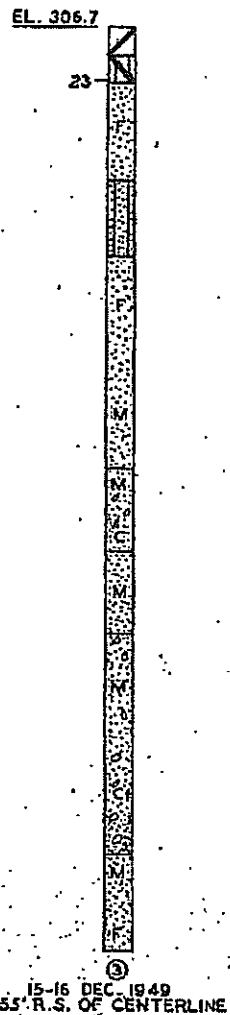
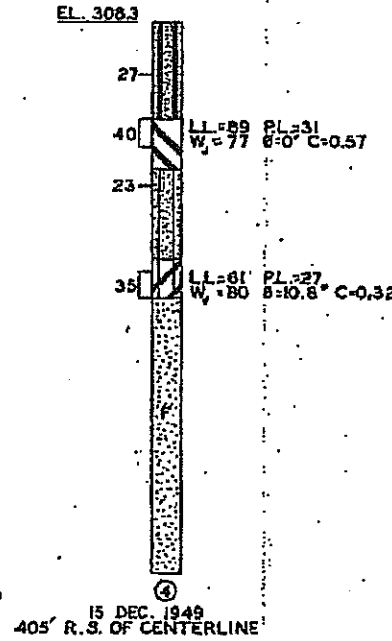
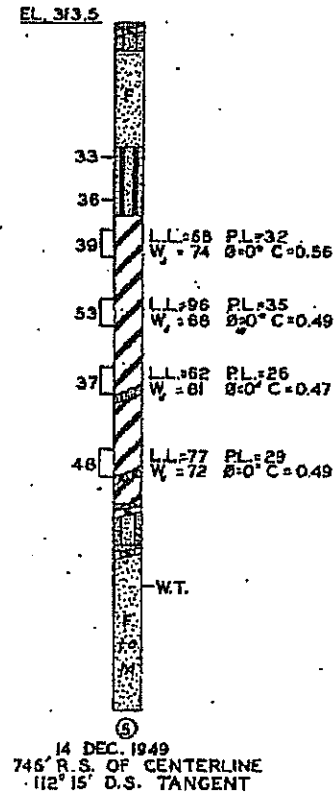
DEPARTMENT OF THE ARMY
 MEMPHIS DISTRICT, CORPS OF ENGINEERS
 GEOTECHNICAL DESIGN SECTION

STATIONS ALONG CENTERLINE OF LEVEE

0/0+00 0/5+00 0/10+00 0/15+00 0/20+00 0/25+00 0/30+00 0/35+00 0/40+00

ELEVATION M.G.L.
320
310
300
290
280
270
260
250
240

ELEVATION M.G.L.
320
310
300
290
280
270



NOTES:
LOCATIONS OF BORINGS ARE PLOTTED ON GENERAL MAP, VICINITY OF CATES, TENN. FILE 167/00.1
NUMBERS AT LEFT OF BORINGS ARE WATER CONTENT IN PERCENT OF DRY WEIGHT.
LIMITS OF UNDISTURBED SAMPLES ARE SHOWN AT LEFT OF BORINGS.
LL=L. LIQUID LIMIT.
PL=P. PLASTIC LIMIT.
Wp=UNIT DRY WEIGHT IN POUNDS PER CUBIC FOOT.
phi=ANGLE OF INTERNAL FRICTION.
C=UNIT COHESIVE STRENGTH IN TONS PER SQUARE FOOT.
phi * C DETERMINED BY QUICK DIRECT SHEAR TESTS.
W.T.=WATER TABLE.



ALL EL. IN NATIONAL GEODETIC VERTICAL DATUM
MISSISSIPPI RIVER AND TRIBUTARIES
NORTHWEST TN HARBOR
BORING LOGS
DEPARTMENT OF THE ARMY
MEMPHIS DISTRICT, CORPS OF ENGINEERS
GEOTECHNICAL DESIGN SECTION